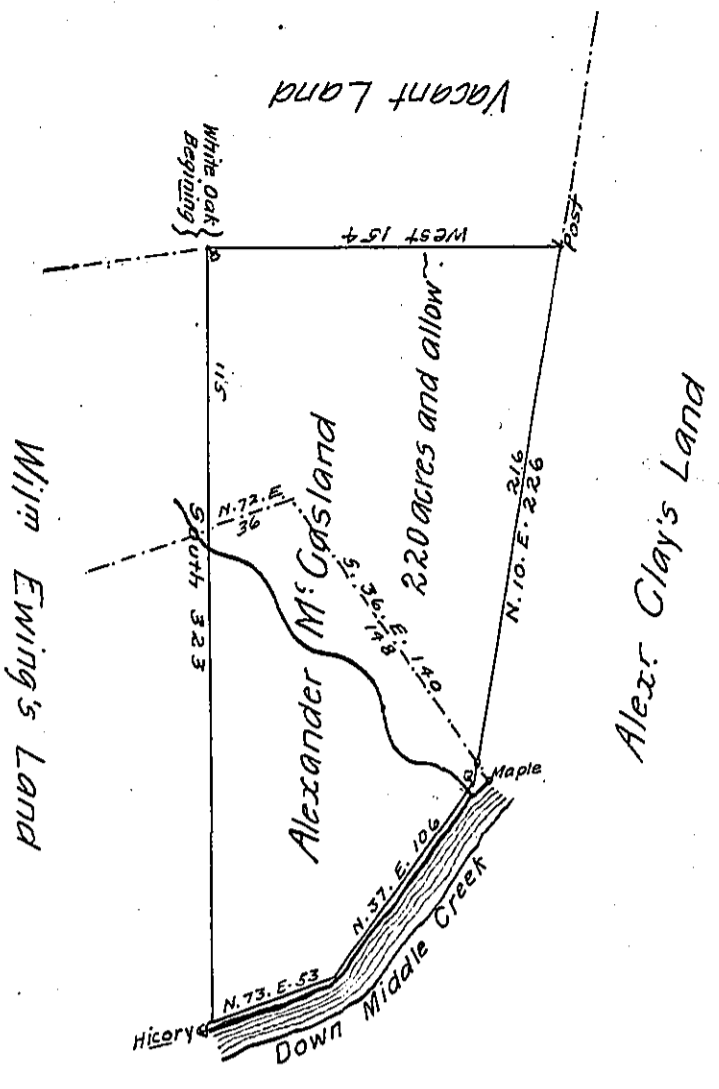


FORM No. 1.



The Draught of a Tract of Land called _____

situate on - a b l i t e r a t e d - of Cumberland containing Two
 Hundred and Twenty acres with the usual Allowance of of Six acres pCent for
 Roads, Survey'd the 15th day of October Anno Dom. 1769 In Pursuance of an Order
 of Survey to Alexander Mc Casland Bearing date at Philad^a the 28th day of
 January Anno Dom. 1768 and No. 4720.

p—

To John Lukens Esq. S.G. }
 of Pennsylvania }

Wm. Maclay D.S.

IN TESTIMONY that the above is a copy of the original remaining on file in
 the Department of Internal Affairs of Pennsylvania, made
 conformably to an Act of Assembly approved the 16th day of
 February, 1833, I have hereunto set my Hand and caused
 the Seal of said Department to be affixed at Harrisburg,
 this twenty-sixth day of June 1906

George D. Brown
 Secretary of Internal Affairs.